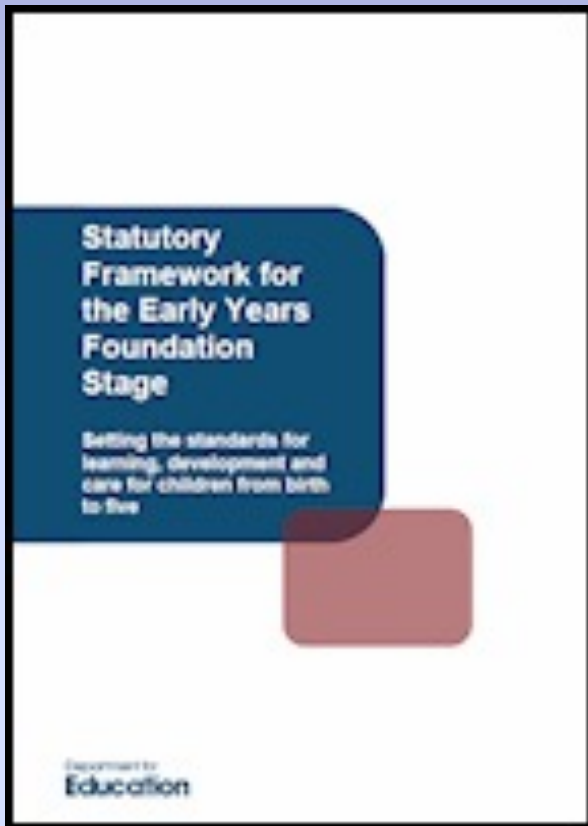


Welcome to Dawpool C of E Primary School

A very warm welcome to
Foundation 1

2022-2023

The Early Years Foundation Stage



The Early Years Foundation Stage covers the education of children from birth to five years old.

The EYFS Curriculum consists of seven areas of learning; Prime Areas and Specific Areas. It is based upon the principles that our youngest children learn best through planned, purposeful play with a mixture of adult led and child initiated activities.

Routine of the Day

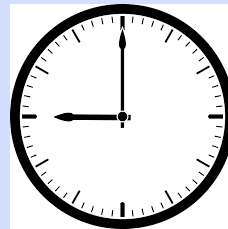
8.45am

- The school gate will open to allow you to walk your child through the playground and drop them off at the Foundation 1 gate.
- Once inside children are encouraged, self register, hang their own coats up and put their snack and water bottles away



9.00am

- Registration begins. The gate and classroom door will be shut at this time and you will need to sign you child in at the main office.
- Helping hands
- Calendar
- Maths – count the children, write the number on the board and perform that amount of actions E.g. claps



Morning Learning



- Every morning we have a chat on the carpet, to see how we are feeling today.
- We have a whole class carpet input. This will be topic, maths or phonics related.
- Throughout the morning children will choose their own learning in the indoor /outdoor environment (continuous provision).
- Adults supporting/enhancing the learning or encouraging children to have a go at an planned adult led activity.

Snack

- Snack and chat - During the morning, children will have milk/water bottles and school will provide a fresh piece of fruit for your child.
- Children are eligible for free milk. You will need to apply for this yourselves and the form is available in your information packs.
- In the afternoon, you can provide your child with a healthy snack.



Children going home at lunch time

11.45

- Please wait by the school office and a member of staff will bring children over and see them out one at time.

Lunchtime 11.45-13.15



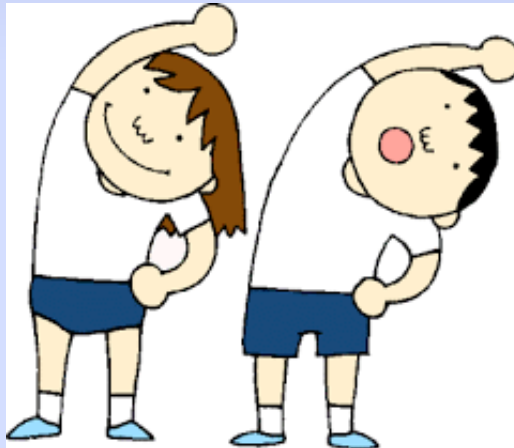
- At 11.45 children will walk to the hall for lunch, where F1 staff will stay with them until 12.15 to support. After this they will then be supervised by midday assistants.
- After all children have finished their lunch they will be supervised outside on the playground.
- Children can choose to have either hot dinners, panini, jacket potato or a deli option.
- Weekly lunch menus are available on the school website. We will ask each morning what option your child has chosen.

Afternoon

- Children come in from lunchtime at 1.15.
- Afternoon registration – maths. Count the children and compare how many we have after some children have gone home.
- Children will be able to choose their own learning during Continuous Provision in the indoor and outdoor area.
- Throughout the afternoon children will be extended in their play and given challenges to extend their learning and understanding.

Physical development

- We have Physical development opportunities throughout the week – field, tyres, bikes/scooters, playground.
- Forest school



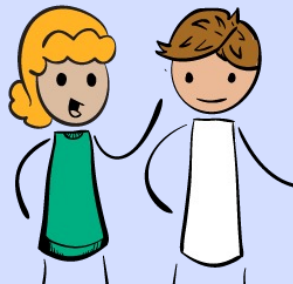
End of the school day 3.25

- In Foundation 1 we finish the day with a story, songs or children have the opportunity to share what they have been busy doing.
- Please wait in the area by the boat in front of the F1 gate and a member of staff will come outside and call the children.
- In order to ensure the children are safely handed over we will see out each child in turn to make sure we can see an adult for them.



Communication

- I am available on the gate before and after school every day if you want to chat about any worries or concerns.
- If you would prefer discuss something more private, we can arrange a time to suit.
- Tapestry – photographs of current learning and WOW moments.



Wrap Around Care

- We offer Wrap Around Care from 7.45am – 5.45pm. More information about these can be found in your packs
- If your child needs to attend any of these facilities then Breakfast Club staff will ensure children are safely handed over to us at the start of each day and we will deliver any After School Club children to the designated place at the end of the school day.



What to Wear

- Royal blue sweatshirt/cardigan
- Light blue polo t-shirt
- Comfortable trousers/leggings (easy to pull up and down independently)
- Sensible shoes/trainers

What To Bring?

- Small school bag – named please!
- Water bottle – named please!
- Afternoon snack if required.
- Spare set of clothes – underwear, socks, trousers, top etc– Named please!

First Aid

- If your child has any medical conditions or allergies PLEASE ensure these are noted down on the forms in your Information Packs.
- Please keep us up to date of any changes about dietary requirements if these change over the year.



Things to do with your child

- Help your child with name recognition
- Support your child in using a knife and fork
- Continue to help your child's independence – putting on their own coat and shoes, toileting and washing hands.
- PLEASE, PLEASE, PLEASE label all clothing and belongings

Photographs

- Please could we ask you to email the school office with a family photograph and an individual photograph of your child. We would like to create a family photograph display over the summer for children to look at and talk about in September. Thank you.

Thank you!

- Thank you for listening!
- Please sign up to a settling in session for your child to attend. This is an opportunity for children to come and have a look at the classroom and have a play.
- Please feel to stay and ask any questions.