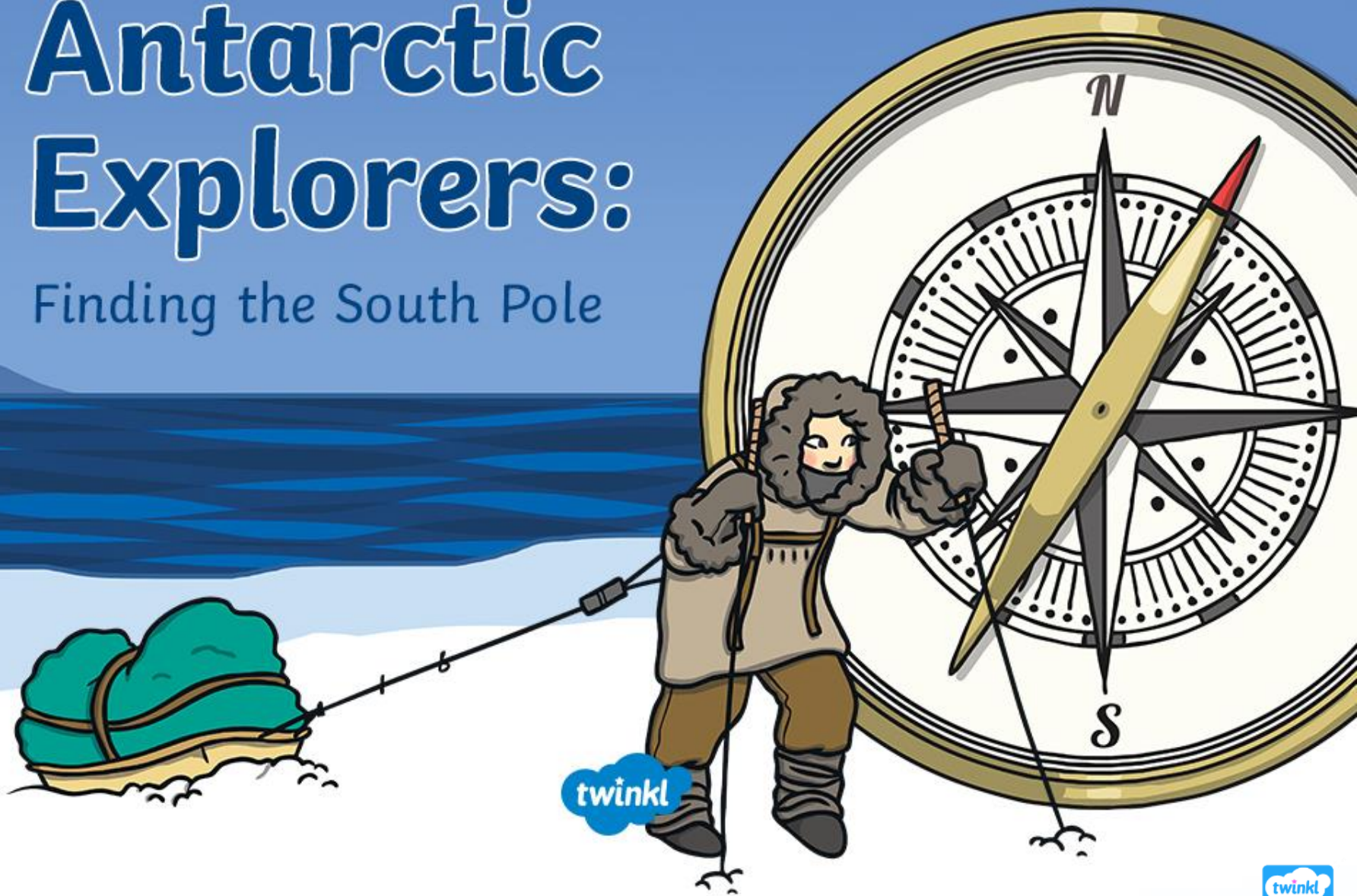


Antarctic Explorers:

Finding the South Pole



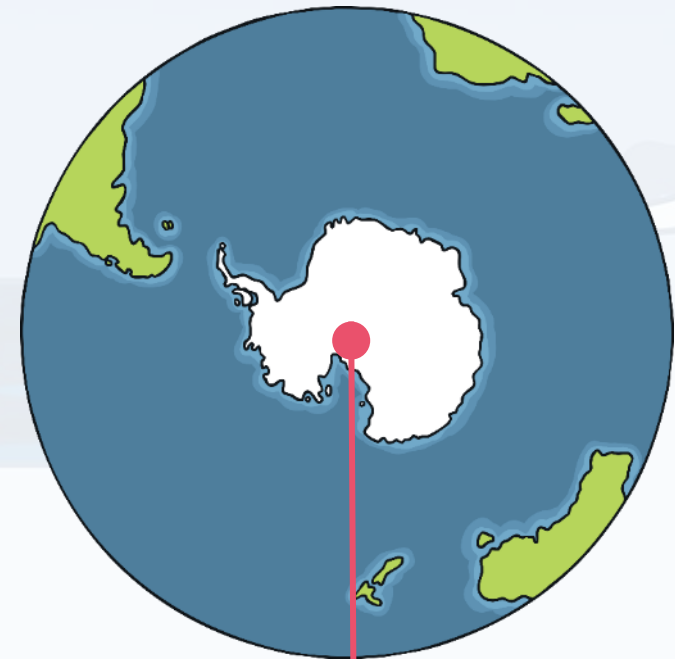
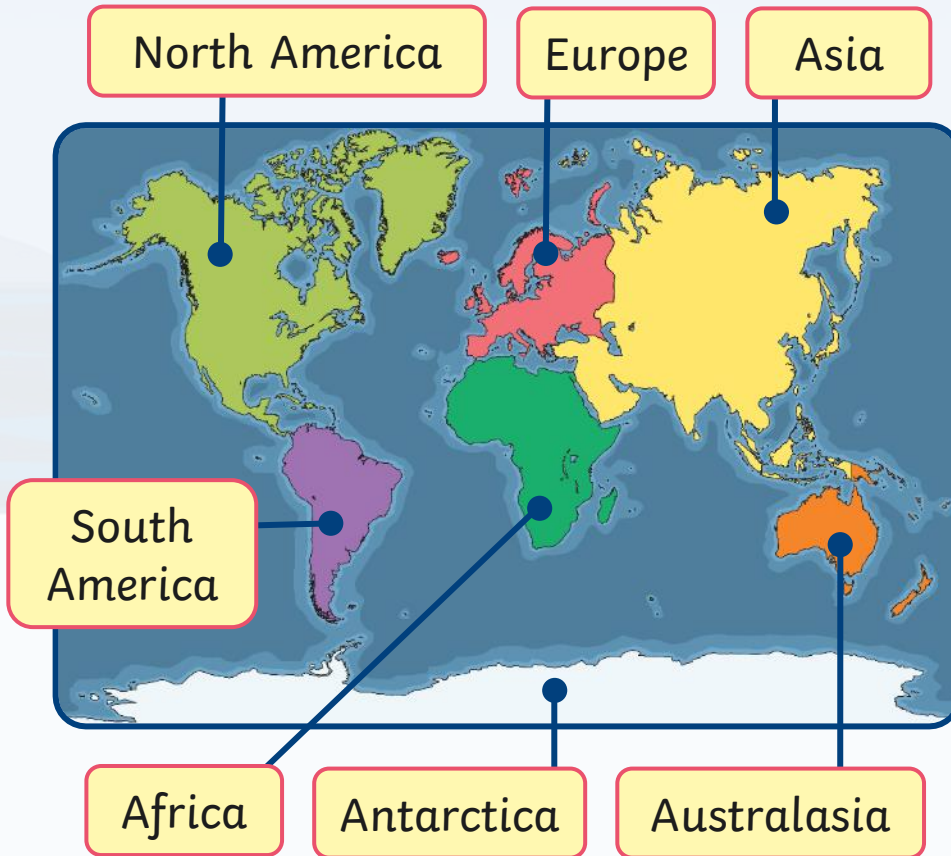
The South Pole

Planet Earth is a sphere, which means it is shaped like a round ball.



The South Pole

Do you know which continent the South Pole is in?



The South Pole
is in Antarctica.

Antarctica

Antarctica is the coldest, driest and windiest continent on Earth.

Although it is covered in ice and snow, it is dry because it hardly ever rains.

It is very difficult for plants and animals to survive here.



Antarctica

For thousands and thousands of years, no humans had ever been to Antarctica.

They weren't even sure it existed!

In the 18th and 19th centuries, many brave explorers tried to find it.

Eventually, humans found Antarctica!

Once it was discovered, the next challenge was to reach the South Pole.



Reaching the South Pole

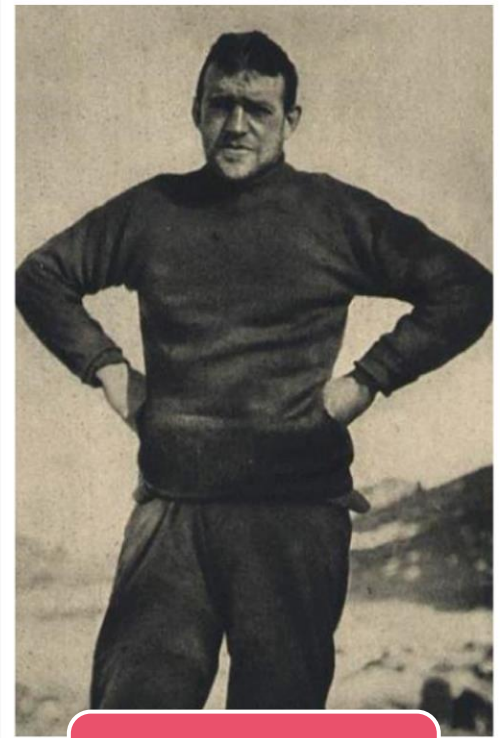
In 1902, Robert Scott, Edward Wilson and Ernest Shackleton set off to try to find the South Pole on the Discovery Expedition.



Scott



Wilson



Shackleton

Discovery Expedition

The team travelled on a sledge pulled by dogs.

They reached further south than anyone had before!

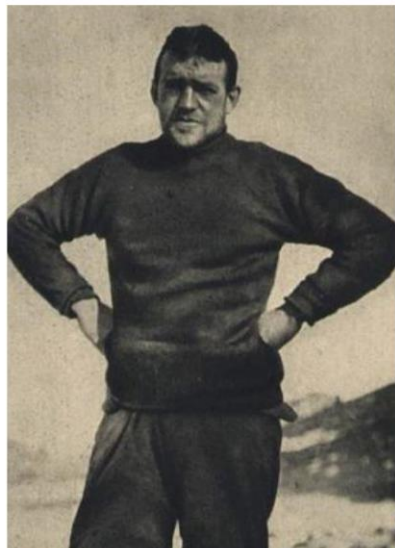
Eventually, they were forced to turn back before reaching the South Pole.

By the time they returned to their ship, the explorers were all suffering from scurvy and frostbite.



Nimrod Expedition

In 1908, Ernest Shackleton made another attempt to reach the South Pole on the Nimrod Expedition.



Shackleton



Alongside him were Frank Wild, Eric Marshall and Jameson Adams.

Can you spot their sledge dogs?

Nimrod Expedition

Travelling across Antarctica was extremely hard work.

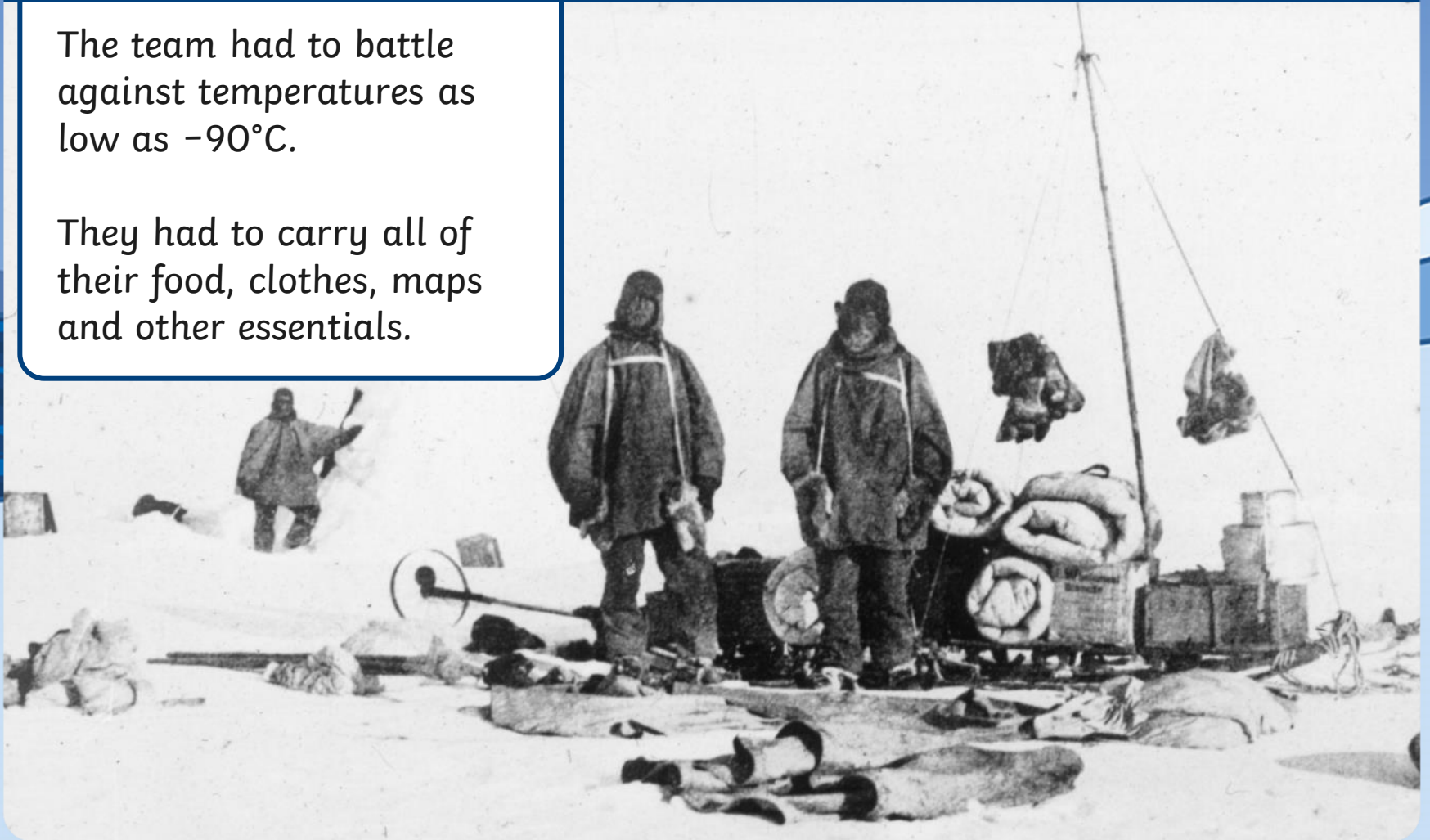
They had to make their way across ice and through thick snow, using pickaxes to clear their path.



Nimrod Expedition

The team had to battle against temperatures as low as -90°C .

They had to carry all of their food, clothes, maps and other essentials.



Nimrod Expedition



They had to set up camp on the ice when they needed to rest.

Can you imagine building your home every bedtime?

Nimrod Expedition

They had limited food.



There was no heating or electricity.



Can you see what Eric Marshall is using for light inside the tent?

Nimrod Expedition

The team encountered many penguins.



What's happening in these pictures?

Nimrod Expedition

The Nimrod team managed to get further than Scott's Discovery team.

However, they became very ill and didn't have enough food to complete the mission.

They returned home before reaching the South Pole.



How do you think they felt about abandoning the mission?

Exploring Today



How do you think expeditions in Antarctica might be different today?

What do we have in the world today that might help modern explorers?

